

# Product Data



One stop retail refrigeration

# Integrated Styling

Maximise impact and profit in fast moving retail environments



Verco styling options transform a run of cabinets into an attractive merchandising display for the fast moving retail food environment. If your space requirements can't be fully accommodated from our standard range, our development department will be happy to review your specific needs



You know your customers and because space is at a premium you have to stock what they need to buy. But you also need space for those high value, impulse purchases. And you want the flexibility to change stock with the seasons without changing your refrigeration equipment several times a year.

So priorities for refrigerated cabinets are compact dimensions, easy access, economical running costs, flexibility and value for money.

## Corner Shops

Freezers and chillers must have the right specification without costing a fortune to buy or to run. With lighter customer traffic both glass door and open cabinets are a practical choice.

Verwood glass door cabinets for frozen and chilled products and the Cambridge open dairy range with its small footprint, are ideal for this environment.

Merchandising is the key to maximising profit in the fast moving retail environment and nowhere is it more important than in the chilled and frozen food sector, where merchandising means maximum use of valuable floorspace, high visibility for the product and constant temperatures to maintain quality and hygiene. To provide the widest choice, Verco offers the UK's leading range of refrigerated glass door and open dairy cabinets. Whether you are fitting a corner shop, a convenience store or a supermarket, Verco's range of glass door and open chill cabinets offers an unrivalled combination of performance, energy efficiency, attractive styling, British build quality and flexibility, whatever the floorspace.

The range offers a choice of more than fifty derivatives. One, two and three-door Richmond and Henley glass door cabinets are available as remote or integral chillers and freezers.

The Cambridge open chill range is available in five lengths at the standard 2035mm height and three lengths at 1500mm midi height. The low-front Kingston open chill range offers three lengths and features the latest horizontal scroll compressor technology allowing us to produce a low-front design of just 350mm to provide significantly more merchandising space than conventional integral cabinets.

Open and glass door cabinets share the same 'monocoque' construction, making the Cambridge, Kingston, Henley and Richmond both lighter and stronger than traditional open cabinets and ensuring a more accurate fit across the whole range when multiplexing.

All cabinets feature the same trim and bump bars and are available with Verco's 'Integrated Styling' option, which allows cabinets to be specified in colour combinations to match your corporate identity.



## Convenience Stores

This fast growing and increasingly competitive sector now includes the leading supermarkets and must by definition offer the same choice as a supermarket with the accessibility and convenience of a corner shop.

Flexibility means profitability and that means a combination of glass door cabinets for maximum visibility and low running costs, and open cabinets for

access. Verco glass door and open cabinets offer excellent merchandising, low running costs and maximum use of floor space. They can also be supplied

colour matched and with integrated fascias and bumper styling.



## and Supermarkets

Merchandising and access are the priorities for the high-traffic, high-volume supermarket environment.

However, the significantly higher cost of running remote open cabinets has led Verco to design and develop Kingston, a new breed of open chill cabinets that offer a low-front integral design with all the benefits of a remote installation.

Henley and Richmond glass door cabinets are also a popular choice for everything from wines and beers to chilled and frozen foods.



# Open Chill Cabinets

More merchandising and easier access



In recent years, open chill cabinets have become increasingly popular in all sectors, allowing easier access to the wider variety of products on offer.

Verco responded to this trend with the introduction of the Cambridge, whilst recognising the UK preference for low-fronted cabinets also provided a much smaller footprint. The Cambridge remains extremely popular in corner shops and smaller convenience stores.

More recently, Verco has set the trend with the launch of the Kingston, a new ultra low-front open cabinet featuring the latest horizontal scroll compressors. Its benefits make it ideal for larger convenience stores and supermarkets.

## Kingston

The latest horizontal scroll compressor technology featured in the Kingston range of integral open chill cabinets has allowed us to produce a low-front design of just 350mm, 182mm lower than the Cambridge. This provides retailers with considerably more merchandising space than conventional integral cabinets.

These stylish integral cabinets combine all the benefits of remote cases - low energy consumption, low noise output, low heat rejection and lower installation costs, with the convenience and mobility of a 'plug-in'.

The range offers three nominal widths - 1.25m, 1.95m and 2.5m - with a standard 2035mm height and 843mm depth. The low-front and low heat rejection make the Kingston ideal for convenience stores and supermarkets where remote cabinets are expensive to install and can't be easily moved to adapt to changing needs.

In tests, the Kingston uses approximately 50% less energy over a 24-hour period, compared to Verco's Cambridge cabinets of the same size.



"...the integral Kingston cabinets proved to be the best option."

## Cambridge

With the introduction of the Cambridge range Verco set new standards of merchandising and energy efficiency in open chill cabinets.

The popular low-front design - just 532mm from floor to lower shelf - provides among the largest volume of any open cabinets available, yet accommodates a large evaporator for lower energy consumption.

A range of sizes is available in standard and midi heights. The small footprint takes up less floor space yet provides deep shelves to maximise merchandising. Stand-alone models are supplied as standard with a glazed panel or optional mirror panel at each side. Multiplexed models have glass dividers. Four moveable shelves are supplied as standard.



Two vertical strip lights provide a more even spread of light than traditional canopy lights. They are accommodated within specially designed side panels that also protect the cabinet from draughts and allow more effective sealing of night blinds to further reduce running costs.



# Glass Door Cabinets

Maximum product integrity with lower running costs

For the majority of smaller and medium sized retailers outside the supermarket sector, the lower running costs and improved product integrity offered by glass door cabinets must be valued higher than a small advantage in access.

The Henley, Richmond and Verwood ranges are ideal for convenience stores, and independent foodstores, where the combination of improved product integrity and lower running costs make them ideal for the merchandising of soft drinks, beers, wines and frozen foods.

Verco's popular Henley and Richmond ranges are fitted with Jumbo doors to give maximum merchandising appeal. The Verwood offers a second range of competitively-priced glass door cabinets.



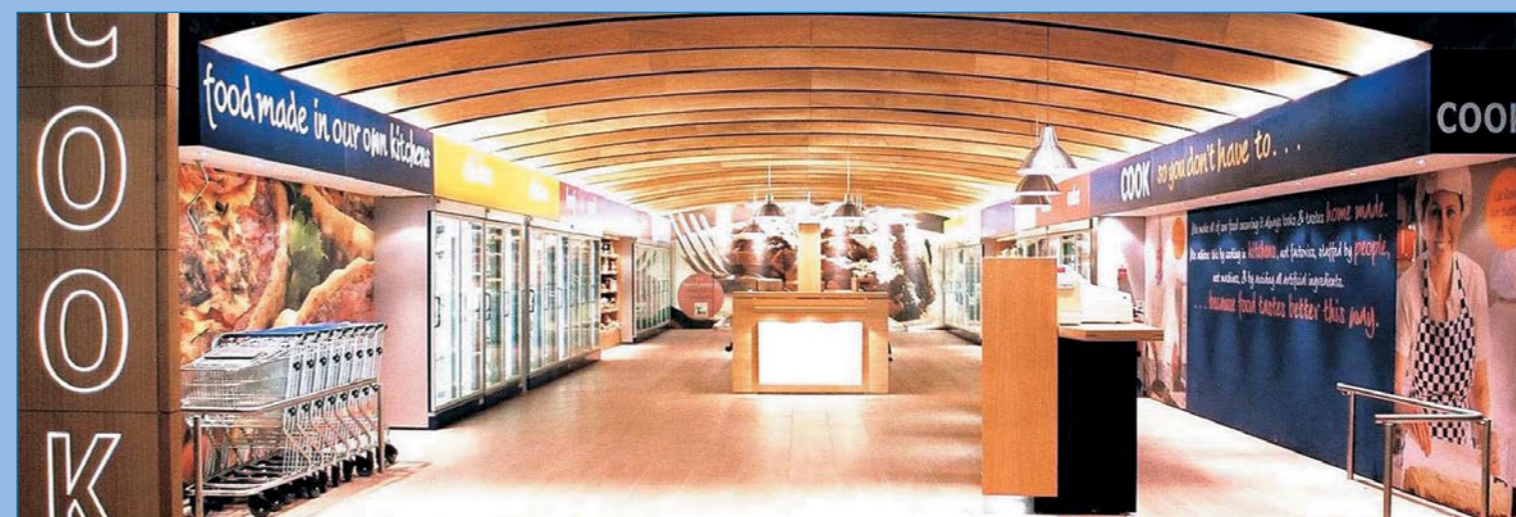
## Henley & Richmond

The Henley and Richmond ranges are available as 1, 2 or 3 door freezer and chiller models for either integral or remote operation. Both are fitted with Jumbo 768mm doors. The Henley is 677mm deep, whilst the Richmond offers a cavernous 867mm depth, to give maximum visual appeal to merchandise.

Both can also be supplied with the same trim and bump bars as the Kingston and Cambridge open chill cabinets, allowing them to be easily integrated to provide an attractive merchandising display for the fast moving retail food environment.



"...the Verco cabinets have consistently met our specification for reliability, availability and competitive pricing."



## Verwood

Verwood is Verco's second range of glass door cabinets that is priced below the Henley and Richmond ranges to offer customers an alternative for installations where specifications and budgets do not require the premium models.

Verwood glass door cabinets are offered in three nominal sizes - 650mm, 1300mm and 1950mm - and share the same trim, headers and bump bar styling as the Henley and Richmond ranges.

Verwood cabinets are also available finished in customers' corporate colour schemes.

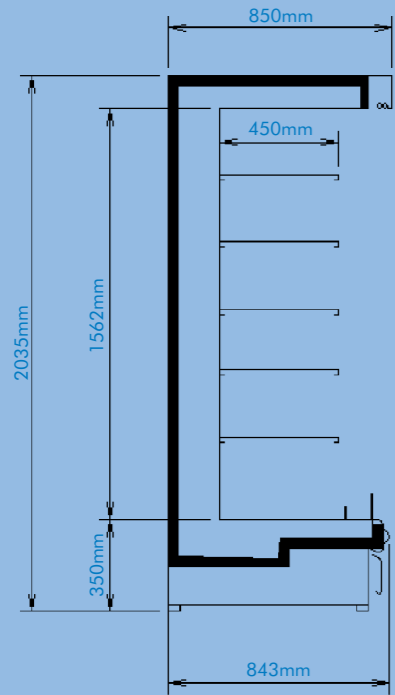
With two different price levels available, Verco is able to provide the widest refrigeration choice for supermarkets and convenience stores.



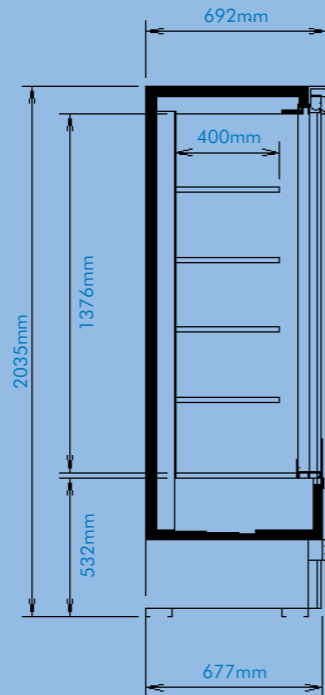
# Dimensions & Specifications

Size, temperature and performance data

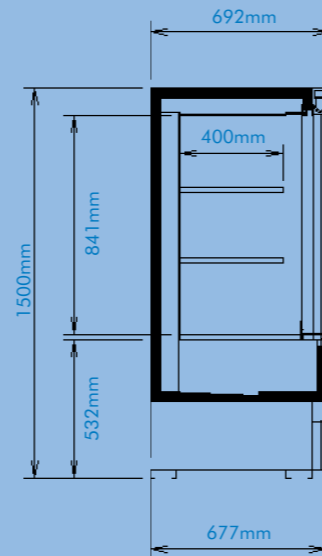
## Open Chill Range



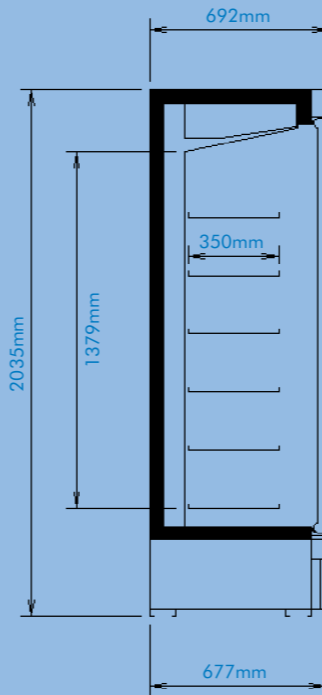
KINGSTON



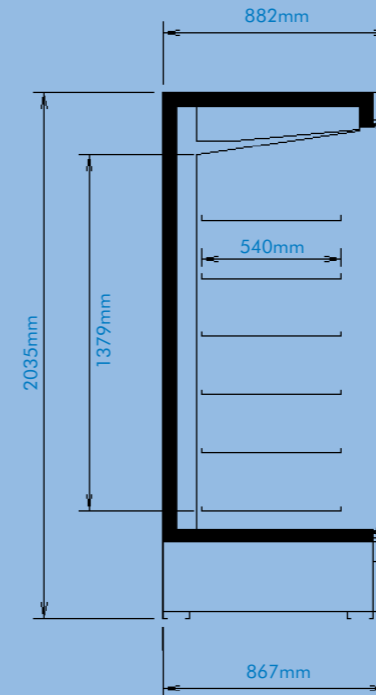
CAMBRIDGE



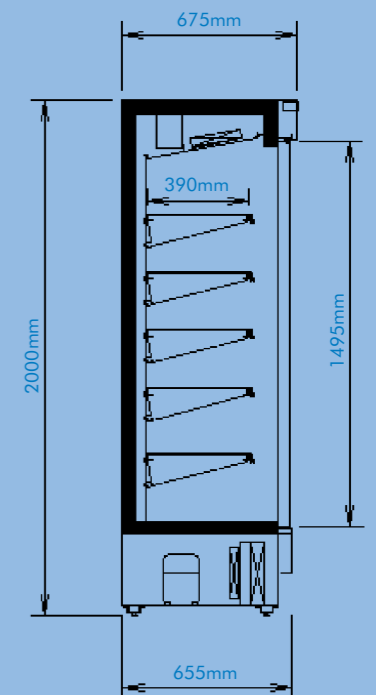
CAMBRIDGE MIDI



HENLEY



RICHMOND



VERWOOD

KINGSTON	K125	K195	K250
Dimensions			
Cabinet Width (mm)	1246	1950	2492
End Walls (40mm each)	80	80	80
Total with Ends (mm)	1326	2030	2572
For total length of case run, add 80mm for a pair of end walls.			
Volume (litres)	819	1283	1638
Energy consumption/heat rejection kW/24hrs			
Dairy -1/+5°C	18.9	29.5	37.8
OPERATING TEMPS.			
	Meat	Dairy	BWS
	-1/+4°C	-1/+5°C	+3/+8°C

Maximum design condition 25°C 60% RH. Dairy & BWS.  
 Maximum design condition 21°C 60% RH. Meat.  
 Dairy & BWS cabinets require a single 13amp supply.  
 Meat cabinets require a single 16amp supply.  
 Energy consumption/heat rejection varies with ambient conditions and usage.  
 Data is based on compressor run times of 18hrs/24hrs and lights on 12hrs/24hrs.  
 Integral cabinets operate on R404a as standard.  
 Cabinets for remote application are supplied complete with case controller, expansion valve (R404a) and heat exchanger.  
 Integral cabinets require an additional 100mm air space behind the cabinet.

CAMBRIDGE	C098	C130	C150
Dimensions			
Width (mm)	980	1300	1536
Volume (litres)	512	688	818
Energy consumption/heat rejection kW			
CAMBRIDGE	C195	C230	C250
Dimensions			
Width (mm)	1950	2304	2492
Volume (litres)	1074	1240	1345
Energy consumption/heat rejection kW			
Dairy -1/+5°C	49.7	59.5	64.3
OPERATING TEMPS.			
		Dairy	BWS
		5°C	+3/+8°C

Maximum design condition 25°C 60% RH.  
 Chill cabinets require a single 13amp supply.  
 Energy consumption/heat rejection varies with ambient conditions and usage.  
 Data is based on compressor run times of 18/24hrs and lights on 12/24hrs.  
 Integral cabinets operate on R404a as standard.  
 Cabinets for remote applications are supplied complete with case controller, expansion valve (R404a) and heat exchanger.  
 Integral cabinets require an additional 100mm air space behind the cabinet.

**WARRANTY - OPEN CHILL CABINETS**  
 Open Chill Cabinets are supplied with a one year parts warranty

HENLEY	1 Door	2 Door	3 Door
Dimensions			
Width (mm)	768	1536	2304
Volume (litres)	320	692	1062
Energy consumption/heat rejection kW			
Chilled Foods	14.9	19.9	25.9
Frozen Foods	26.6	51.6	76.8
Ice Cream	32.6	63.6	94.8

RICHMOND	1 Door	2 Door	3 Door
Dimensions			
Width (mm)	768	1536	2304
Volume (litres)	495	1066	1638
Energy consumption/heat rejection kW			
Chilled Foods	14.9	19.9	25.9
Frozen Foods	26.6	51.6	76.8
Ice Cream	32.6	63.6	94.8

OPERATING TEMPS.	Chilled Foods	Frozen Foods	Ice Cream
	-1/+5°C	-21/-23°C	-23/-25°C

**WARRANTY - GLASS DOOR CABINETS**  
 Glass Door Cabinets are supplied with a one year parts warranty.

All chill temperature cabinets will operate on a single 13amp supply.  
 All Frozen food cabinets require a single 13amp supply for each door.  
 Energy consumption/heat rejection will vary with ambient conditions and usage.  
 Information shown is a guide only and based on a typical compressor run time of 18hrs/24hrs and lights on 12hrs/24hrs.  
 Integral cabinets operate on R404a as standard.

VERWOOD	1 Door	2 Door	3 Door
Dimensions			
Width (mm)	650	1300	1950
Volume (litres)	264	579	893
Energy consumption/heat rejection kW			
Chilled Foods	10.62	11.3	14.23
Frozen Foods	18.2	35.8	40.7



Certificate No. 945331



# Accessories & Derivatives

Add versatility to your merchandising

“...Verco were able to supply security screens and finish the cabinets in our corporate colours.”



Optional point-of-sale accessories include can slide systems for soft drinks; three-tier sandwich shelves - stepped to show the fillings for each pack; chocolate shelves and pin rail systems for cooked meats.

Most retailers would acknowledge that a full height glass door cabinet provides the ultimate merchandising opportunity, especially for added-value foods. However, it is often claimed that in supermarkets and other high traffic environments, they slow shoppers down and cause hold-ups.

However, for smaller supermarkets and today's larger convenience stores, food displayed on their generous shelving with complimentary lighting can catch the customer's eye and help to secure profitable impulse purchases.

Cabinets can also be specified with additional undershelf lighting. If required, baskets can be fitted in the bottom of the cabinets to accommodate bulky items - just like a combi, but much more efficient.

All cabinets can also be specified with special colours to match your corporate identity and enhance the integrated styling of multiplexed installations.

Verco manufactures the UK's leading range of glass door freezer cabinets. With more than thirty different models to choose from - including jumbo door, shallow and deep, full and midi height - the range offers unrivalled flexibility whatever the floorspace.

## Security

Verco has also identified the need for a higher level of security to protect high-value alcoholic products from theft outside licensing hours.

The company's new range of high-security cabinets is available with lockable aluminium roller blinds, similar to those found on cigarette displays, rather than the flimsy fabric screens that are usually used to cover merchandise. Alternatively Verco's Henley and Richmond cabinets can be fitted with lockable glass doors.



The cabinet 'headers' that accommodate the roller blinds at the top of cabinet can also be printed to promote alcohol lines.

The lockable roller blinds are available on Verco's C098, C130 and C150 Cambridge models and K125, K195 and K250 Kingston models.

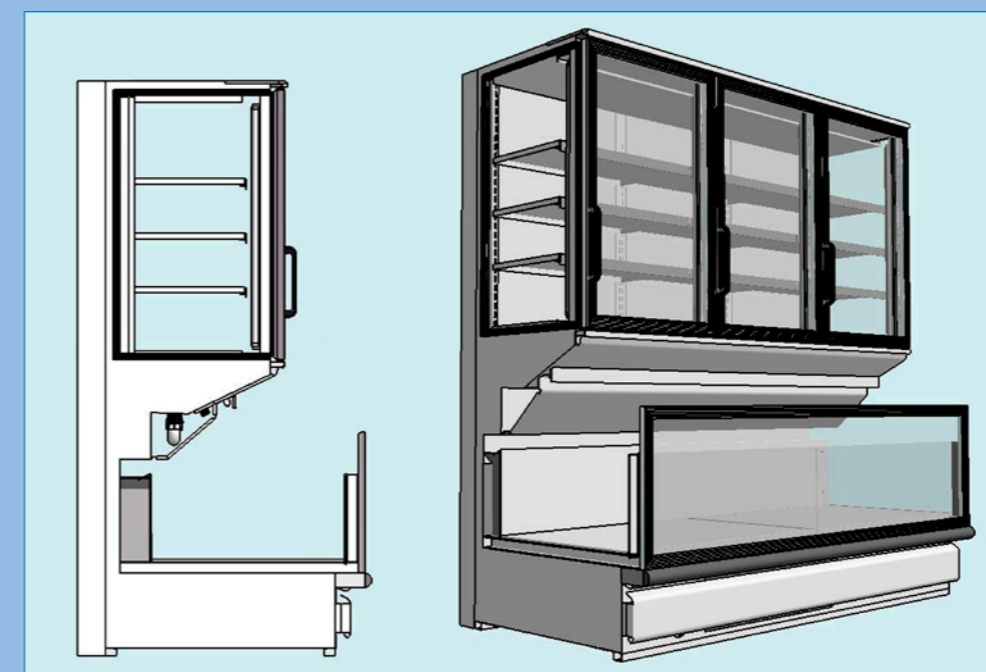
## The environment

Because Verco is committed to an environmental policy that includes monitoring the development of environmentally friendly materials, we have Calor's Care 50 hydrocarbon gas as an option on our plug-in cabinet range.

Care 50 is a performance optimised blend of R290 and R170, propane and ethane, which provides impressive energy savings and requires only minimal system changes when switching from R22, R502, R407C, and R404A.



We also continue to work with all our suppliers to ensure that our cabinets remain the most environmentally friendly available.



## And finally...

For the last word in flexibility - if a customer's requirements can't be fully accommodated from our off-the-peg range, Verco will be happy to discuss your specific requirements.



# The Company

A leading manufacturer of glass door and open chill cabinets



**F**ounded in 1965, Verco has built a reputation for supplying quality refrigerated glass door and open chill cabinets to supermarkets, convenience and forecourt stores. We are now a leading supplier of retail refrigeration and the largest UK manufacturer of glass door cabinets.

80% of the content of Verco cabinets is manufactured at our Oxfordshire factory where flow line manufacturing enables us to process orders efficiently, whilst giving us the flexibility to produce cabinets with 'Integrated Styling'.

We are certified to the ISO9001 quality standard, which extends to the design and manufacturing of our entire range.

Recognising that many customers are committed to environmental policies, we constantly monitor environmentally friendly materials in order to respond to changing specifications. We have a CFC-free foam plant for cabinet insulation and have standardised on the friendliest refrigerants available for integral cabinets.



One stop retail refrigeration

Verco Limited, Hithercroft Road, Wallingford, Oxon OX10 9DG.  
Telephone: 01491 839966 Fax: 01491 835656 Email: sales@ver.co.uk Website: www.ver.co.uk